



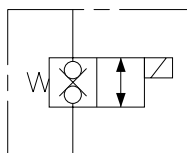
2.27

% E6#" Ž\$*

(bar) 240
(L/min) 75.7

.
. .
. IP69K E
. .
. .
. .

02
02
02
02
03
03
04



2

0.16

240bar

7

0.41

IP69K

		240bar	3500psi		
		75.7L/min	20gpm		
		0.25 mL/min	5 /min	@ 240bar	
		85%	115%		
20	E	12VDC	1.7 A	24VDC	0.85 A
	D	12VDC	1.67 A	24VDC	0.83 A
		240bar		85%	
		VC10-2			
		7.4	420mm ² /s		
		-40	100		
		-54	107		
		-26	204		
		ISO4406 18/16/13			15/13/11

bar/psi

L/min /gpm

